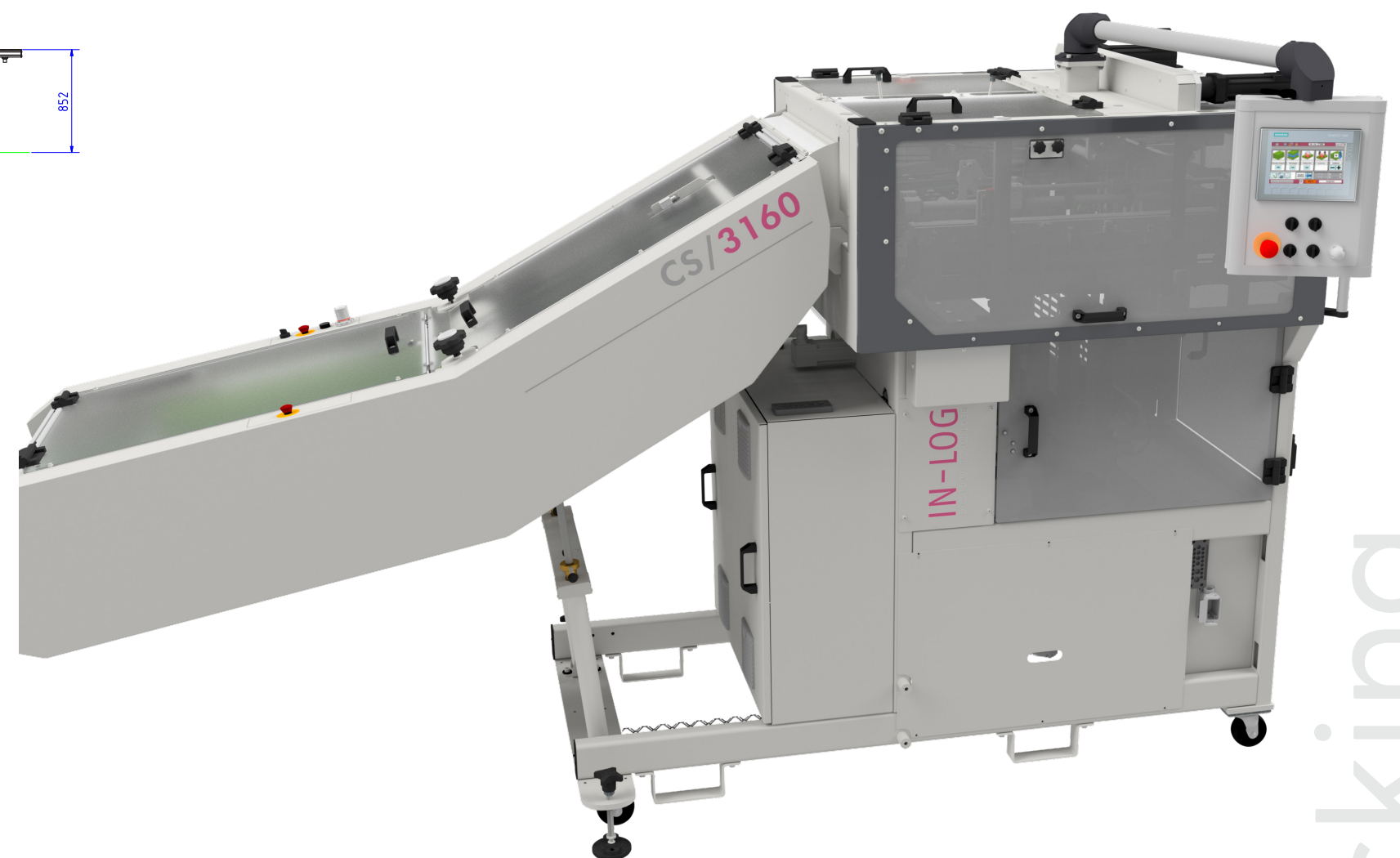
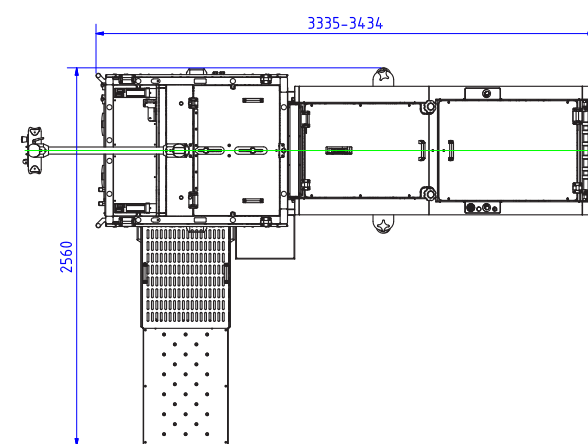
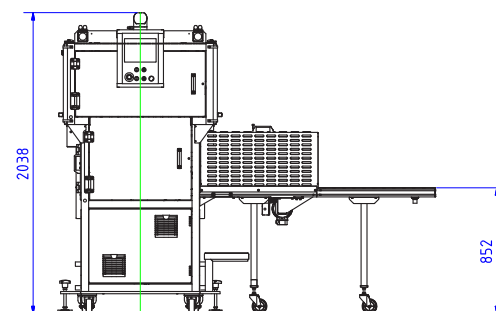
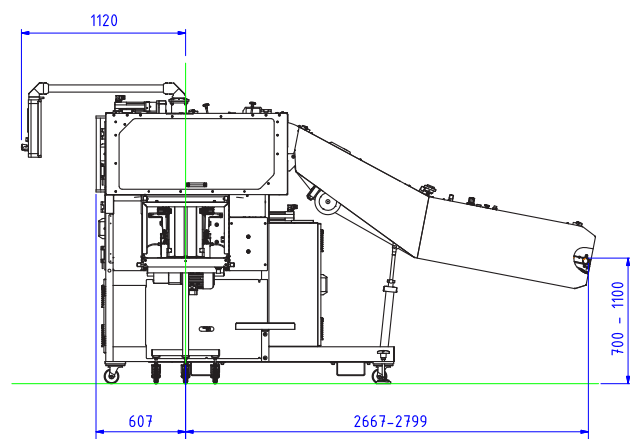


PERFORMANCE BEYOND EXPECTATIONS



Merten Maschinenbau u. Vertriebs GmbH

A-1220 Vienna, Puchgasse 9
 Phone: +43 1 2594648
 Fax: +43 1 2594648-25
 E-Mail: mm-office@merten.at
 Internet: www.in-log.com

IN-LOG is a brand of Merten Maschinenbau u. Vertriebs GmbH

CS/3160F & CS/4160F

stacking



Compensating stacker CS/3160F & CS/4160F

The new CS/3160F / CS/4160F seeks its equal. The machine combines many years of expertise and innovation. The successfully established liftback technology has been combined with mechanical components of the highest quality. This results in the high-end stacker which is suitable for the use of 4 to 128 pages with all types of newsprints and grammages at highest machine speeds. As in the past, we gave high priority to low maintenance costs and easy handling. The generous use of transparent covers and doors provides a very good overview of what is happening in the machine.

Your advantages with CS/3160F and CS/4160F

- high availability at maximum machine speeds
- simple handling by self-explanatory control surface (symbols)
- state-of-the art Siemens ET200SP control and 7" Siemens touch-color-display
- easy access thanks to the cleverly designed frame construction
- highest possible safety level (lift falling protection during maintenance)
- perfect bundle quality because of synchronous fork spread by toothed-belt/cylinder-combination
- use of servo gear motors/controllers for the vertical lift function and pusher
- transparent covers ensure a maximum amount of light inside the machine

Machine:	Compensating stacker		
Short description:	CS/3160F	with left or right hand pusher	
	CS/3160H	with high infeed (possible with left-, right hand or straight-through pusher)	
Drive:	CS/3160FS	with straight-through pusher	
	Main drive	AC-motor	1.500 Watt (1x)
	Waste gate	AC-motor	180 Watt (1x)
	Ejector arm	Servo-motor	520 Watt (1x)
	Delivery conveyor	AC-motor	370 Watt (1x)
	Lift	Servo-motor	640 Watt (2x)
	Turn table	Servo-motor	1.100 Watt (1x)(only at straight-through ejector)
	synchronous speed control via voltage generator, of the rotary printing press or stitching machine		
Control system:	synchronous speed control via voltage generator, of the rotary printing press or stitching machine		
Tachometer signal output:	U max. 180 V DC		
Analog signal:	UE 0-10 V DC		
from rotary printing press	I max. 15 mA		
Belt speed:	Adjustable from 8 - 100 m/min (64 m/min at 50 Hz)		
Performance:	> 135.000 copies / hour (look at diagram)		

Travel direction:	spine edge ahead (other travel directions conditional possible)
Page count:	4 - 128 pages (60 g/m²)
Stack format L x W:	min. 110 x 145 mm; max. 325 x 500 mm
Product stream thickness:	max. 30 mm
Clearance between products:	min. 30 mm; max. 80 mm
Deviation:	±15% to standard clearance
Side clearance of product stream:	±20 mm
Paper weight:	35 - 140 g/m²
Standard format plates:	A5: min. 138 x 200 mm; max. 168 x 270 mm A4: min. 200 x 287 mm; max. 230 x 357 mm A3: min. 287 x 410 mm; max. 317 x 480 mm
Stack height:	min. 30 mm; max. 300 mm
Bin stack height:	max. 180 mm
Product alignment:	by vibrating belts adjustable during operation
Slide adjustment:	with two spindles for alignment slides, adjustable from both sides of the machine

Operation:	via commander
Press rolls:	Double rollers; pressure pneumatically adjustable
Air requirements:	Air consumption: 500 Norm l / min (30 Nm³/h) Air pressure: min. 6 bar; max. 7 bar



7" Touch-Color-Display
with 270° swivelling commander

Noise level:	82dB (A) Maximum Conforming to DIN45635 paragraph 27
--------------	---

Monitoring device:	Switch off when product jams Switch off during emergency stop Switch off when the top guard is open Switch off when the door is open Switch off during loss of air pressure
--------------------	---

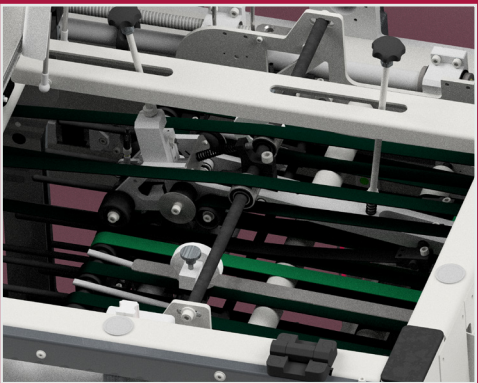
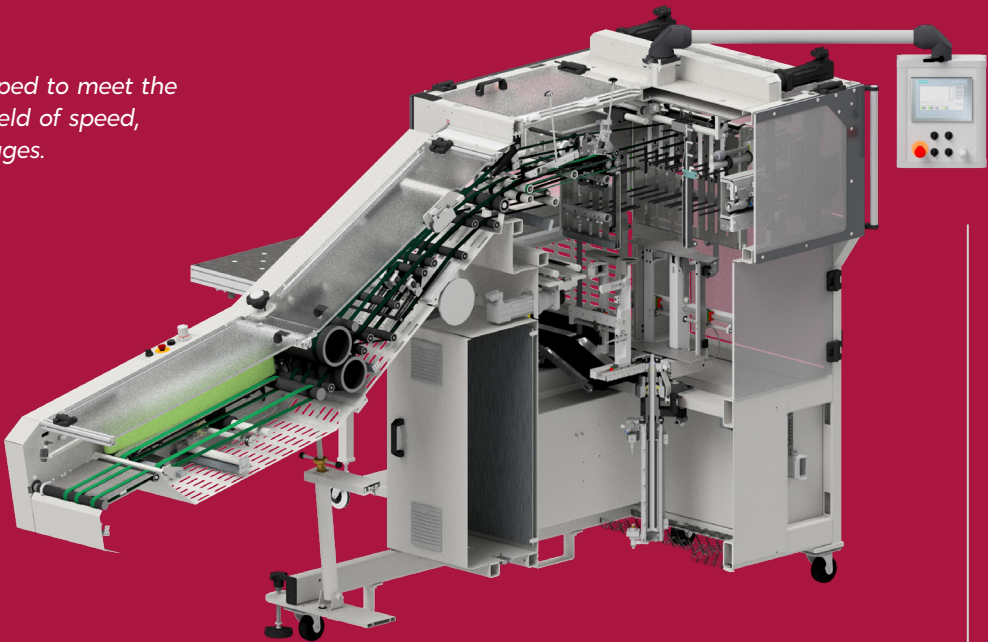
Input power:	4.000 Watt
Voltage:	3 x 400 V AC + N + PE 50/60 Hz 3 x 400 V AC + PE 50/60 Hz (special version)
Control voltage:	24 Volt
Nominal current:	8 Ampere (14 Ampere with straight-through pusher)
Primary fuse:	16 Ampere (32 Ampere with straight-through pusher)

Infeed height:	700 - 1.100 mm (1.000 - 1.700 mm with high infeed)
Delivery height:	852 mm
Total length:	3.335 - 3.434 mm
	4.702 - 4.834 mm (with straight-through ejector)
Total width:	1.294 mm (including stairs)
	2.560 mm (including stairs and delivery conveyor)
Total height:	2.038 mm

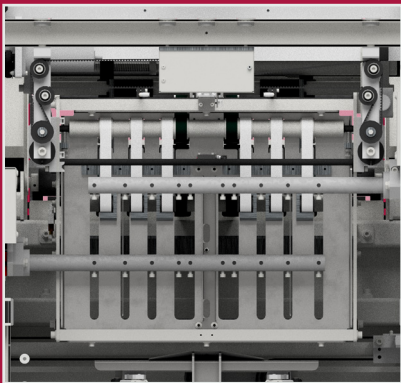
Weight:	ca. 1.200 kg (1.300 kg with straight-through ejector)
Color:	RAL 7035

Other colors, conveying heights and technical specifications, are available. IN-DAT-CS3160F-CS3160H-CS3160FS	
---	--

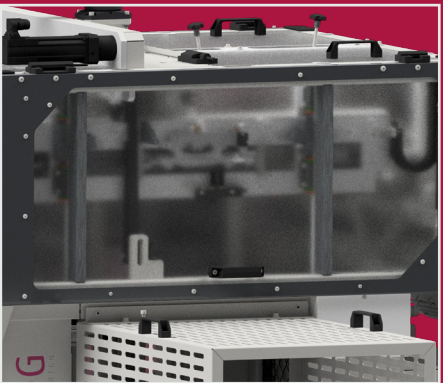
The machine has been developed to meet the existing requirements in the field of speed, grammage and number of pages.



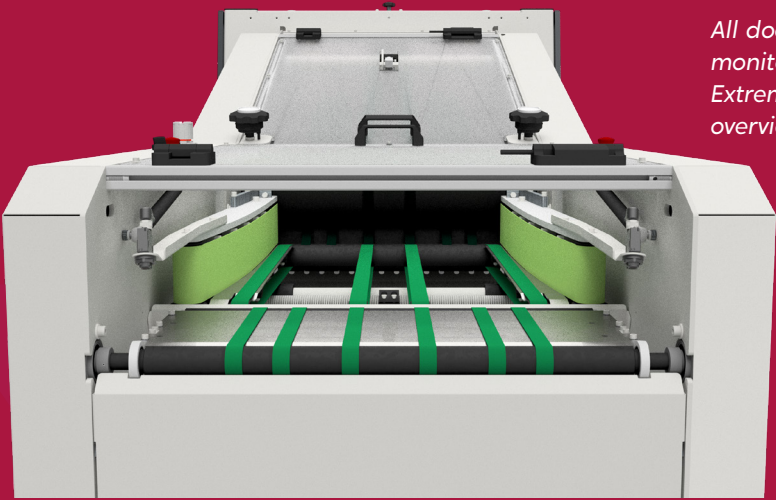
High performance gapper for clear separation of the shingle stream.



The synchronous fork spread is guaranteed by a toothed-belt-cylinder-combination.



Good overview and transparency because of spacious doors and coverings, especially in the area of gapper, upper bin and turn bin.



All doors and cover casings are monitored by inductive switches. Extremely flat infeed for perfect overview and high handling comfort.

