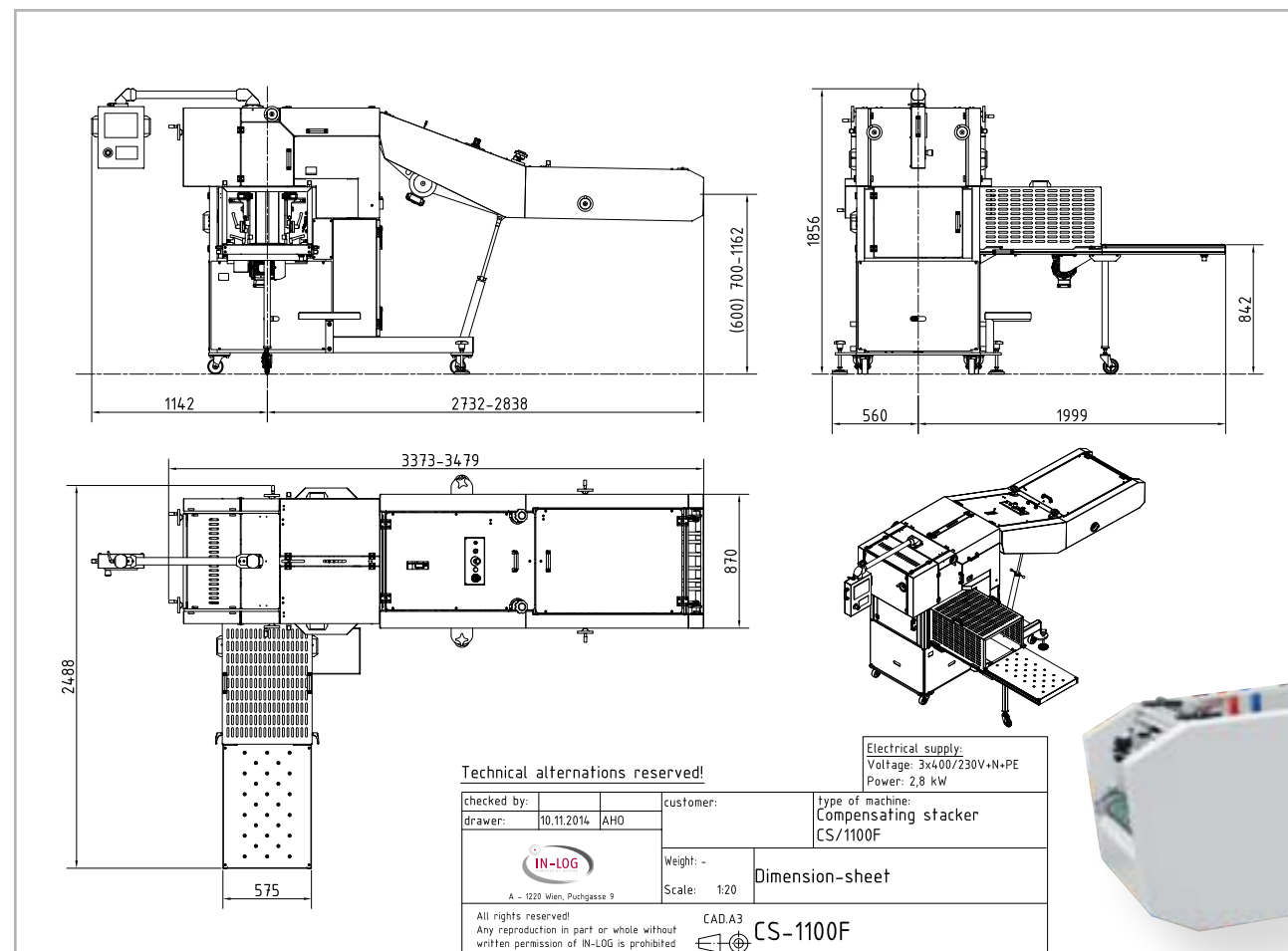




PERFORMANCE BEYOND EXPECTATIONS



COMPENSATING STACKER CS/1100F / CS/2100F



Merten Maschinenbau und Vertriebs GmbH
A-1220 Vienna, Puchgasse 9
Phone: +43 1 2594648-0
Fax: +43 1 2594648-25
E-Mail: office@merten.in-log.com
Internet: www.in-log.com

stacking



Compensating Stacker CS/1100F / CS/2100F

The new **CS/1100F**, developed on the basis of the CS/1140, impresses with its high-quality design and its performance data. The machine can be used **for 4 pages up to 128 pages** with all web paper qualities and grammages. Thanks to the components used and the proven Merten precision the stacker is attractive for its **low maintenance costs for many years of use in 24/7 operation**. When developing the stacker major priority was given to easy handling. This is supported by the latest generation of **SIMATIC S7 control system** with the corresponding OP 4-color display.

YOUR ADVANTAGES WITH CS/1100F AND CS/2100F

- ❑ High availability
- ❑ Simple operation
- ❑ Modern, latest generation of control system
- ❑ Heavy, stable version
- ❑ Little spatial requirements
- ❑ Perfect stack quality

Latest generation of Siemens
OP 4-color-display on
swivel-mounted commander.



MACHINE DESCRIPTION

COMPENSATING STACKER CS/1100F / CS/2100F

DRIVE:	Pusher drive	AC-motor	370 Watt (1x)
	Main drive	AC-motor	1.500 Watt (1x)
	Delivery conveyor	AC-motor	370 Watt (1x)
CONTROL SYSTEM:	Synchronous speed control via voltage generator of the rotary printing press or stitching machine		
TACHOMETER SIGNAL OUTPUT:	U max. 180 V DC		
ANALOG SIGNAL:	UE 0-10V DC		
FROM ROTARY PRINTING PRESS:	I max. 15 mA		
BELT SPEED:	Adjustable from 8 - 80 m/min. (64 m/min. at 50 Hz)		
CYCLE SPEED:	Up to 100.000 copies per hour		
TRAVEL DIRECTION:	Spine edge ahead (other travel directions conditionally possible)		
NUMBER OF PAGES:	4 - 128 pages (at 60 g/m ²)		
PRODUCT STREAM THICKNESS:	max. 25 mm		
CLEARANCE BETWEEN PRODUCTS:	min. 30 mm, max. 80 mm		
DEVIATION:	+/- 15%		
SIDE CLEARANCE OF PRODUCT STREAM:	+/- 20 mm		
PAPER WEIGHT (GRAMMAGE):	35 - 140 g/m ²		
PRODUCT SIZE:	Width:	min. 145 mm, max. 498 mm	
	Length:	min. 110 mm, max. 320 mm	
STACK HEIGHT:	min. 30 mm, max. 300 mm		
BIN STACK HEIGHT:	max. 130 mm		
PRODUCT ALIGNMENT:	By vibrating belts, adjustable during operation		
SLIDE ADJUSTMENT:	With two spindles for alignment slides, adjustable from both sides of the machine		
OPERATION:	Commander on swivel arm, machine movable on rollers		
PRESS ROLLS:	Pressure pneumatically adjustable		
AIR REQUIREMENTS:	Air consumption: 500 Norm l/min.		
AIR PRESSURE:	min. 5 bar, max. 7 bar		
MONITORING DEVICE:	Switch off when product jams, switch off during emergency stop		



Because of its remarkably compact construction the stacker is ideally suited as replacement investment. The delivery conveyor will be adjusted to the individual spatial requirements.



All important control elements are there where they are needed.

The pneumatic press roll is continuously adjustable in pressure and gap.

The alignment with vertical vibrating conveyors has been extended for high speeds.

All door and cap coverings are monitored by inductive switches. Extremely flat infeed with operating comfort.

